



2025 Rental Projection
46 N Barrett Sq, #401

Seasons	Season period	Approximate Nightly Rate	Total weeks
Winter	1/4/25	\$600	1/2
Early Spring	2/13/25	\$600	1
Spring Break	3/8/25	\$835	2
Peak Spring Break	3/29/25	\$875	1
Late Spring	4/5/25	\$795	4
Summer	5/24/25	\$900	5
4th of July	6/28/25	\$975	1
Summer	7/5/25	\$900	4
Summer II	8/2/25	\$825	1
Summer Low	8/16/25	\$750	1-1/2
Labor Day	8/28/25	\$850	1/2
Late Summer	9/2/25	\$600	2
Fall Break	10/4//25	\$795	2
Fall	10/25/25	\$700	1/2
Thanksgiving	11/22/25	\$795	1
Winter	11/29/25	\$600	0
Christmas & New Years	12/25/25	\$795	1
Total		\$161,085	30 Weeks

Total Weeks: 27 – 33
Total Gross Rent Range: 144,977 – \$177,193

OUR CONTACT



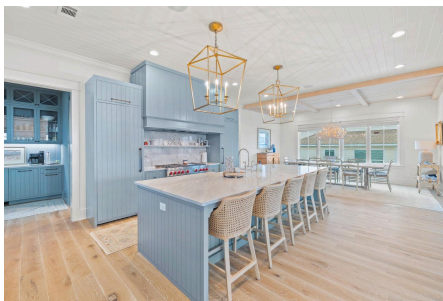
Premium Properties | Attentive Service

30-A Beach Properties provides a superior level of rental management and home maintenance. You are invited to join our exquisite selection of vacation rentals in the most prestigious areas of 30-A.

Since 2010, we have curated a collection of elegant cottages and upscale condos in highly sought-after locations. Our specialized property management services are designed to maximize your revenue while preserving the beauty and integrity of your investment.

With a team of seasoned inspectors, meticulous housekeepers, and attentive rental managers, we ensure that your property receives the utmost care. Elevate your rental experience with us and indulge in unparalleled luxury.

Info@30abeachproperties.com | 850-806-1825 | 30abeachproperties.com



*This projection is an estimate, not a guarantee of income, market conditions are subject to change